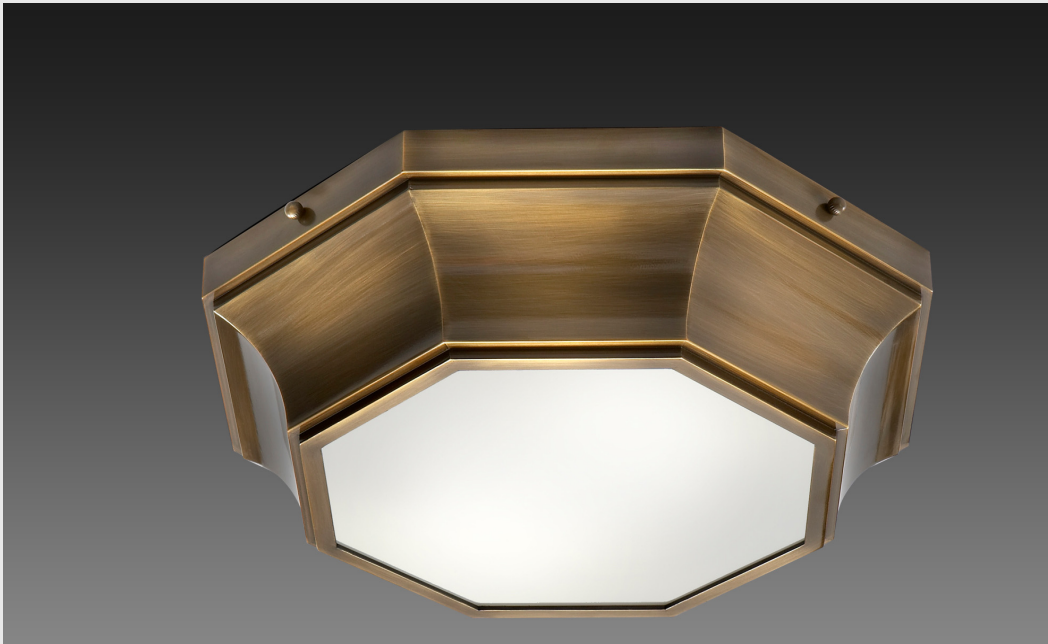


# YORKVILLE



AD32784-15  
Yorkville fixture is shown in Satin Brass "A" on Aluminum  
with White Acrylic Bottom Diffuser



AD32786-15  
Yorkville EM fixture is shown in Satin Brass "A" on  
Aluminum with White Acrylic Bottom Diffuser

BALDINGER AD COLLECTION

MODEL NO. &  
DIMENSIONS

METAL FINISHES

DIFFUSERS

LAMPING  
OPTIONS

YORKVILLE



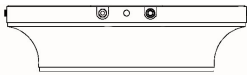
**AD32784-15**  
Diameter: 15"  
Height: 4"  
Weight: 9 Lbs.

**BA** Satin Brass "A"  
**BB** Antique Brass "B"  
**AB** Antique Brass

**3D** White Acrylic

**20H** 2x18W CFQ  
G24q-2 Base  
**1** 120V or **2** 277V

YORKVILLE EM



**AD32786-15**  
Diameter: 15"  
Height: 4"  
Weight: 12 Lbs.

**BA** Satin Brass "A"  
**BB** Antique Brass "B"  
**AB** Antique Brass

**3D** White Acrylic

**71H** 2x18W CFQ  
G24q-2 Base, Standard  
Electronic and EM Ballasts  
**1** 120V or **2** 277V

CEILING FIXTURES - YORKVILLE

**GENERAL NOTES**

- All fluorescent models are electronic High Power Factor.
- Cut sheets are available showing all details and mounting information.
- Hand applied finishes may vary
- I.B.E.W. labeled and cUL listed
- Inquire with factory for custom finishes, diffusers and lamping.
- F.O.B. Astoria, New York
- Lamps and mounting hardware not included.
- Specifications are subject to change. Please confirm with factory when ordering.

**When specifying or ordering, please indicate:**

\_\_\_\_\_ - \_\_\_\_\_ - \_\_\_\_\_ - 0 - \_\_\_\_\_ - \_\_\_\_\_  
Model Number - Metal Finish - Diffuser - 0 - Lamping - Voltage

For example a Yorkville in Painted Satin Brass on Aluminum with White Acrylic Diffuser and 120V would be:

AD3278415 - BA - 3D - 0 - 20H - 1  
Model Number - Metal Finish - Diffuser - 0 - Lamping - Voltage