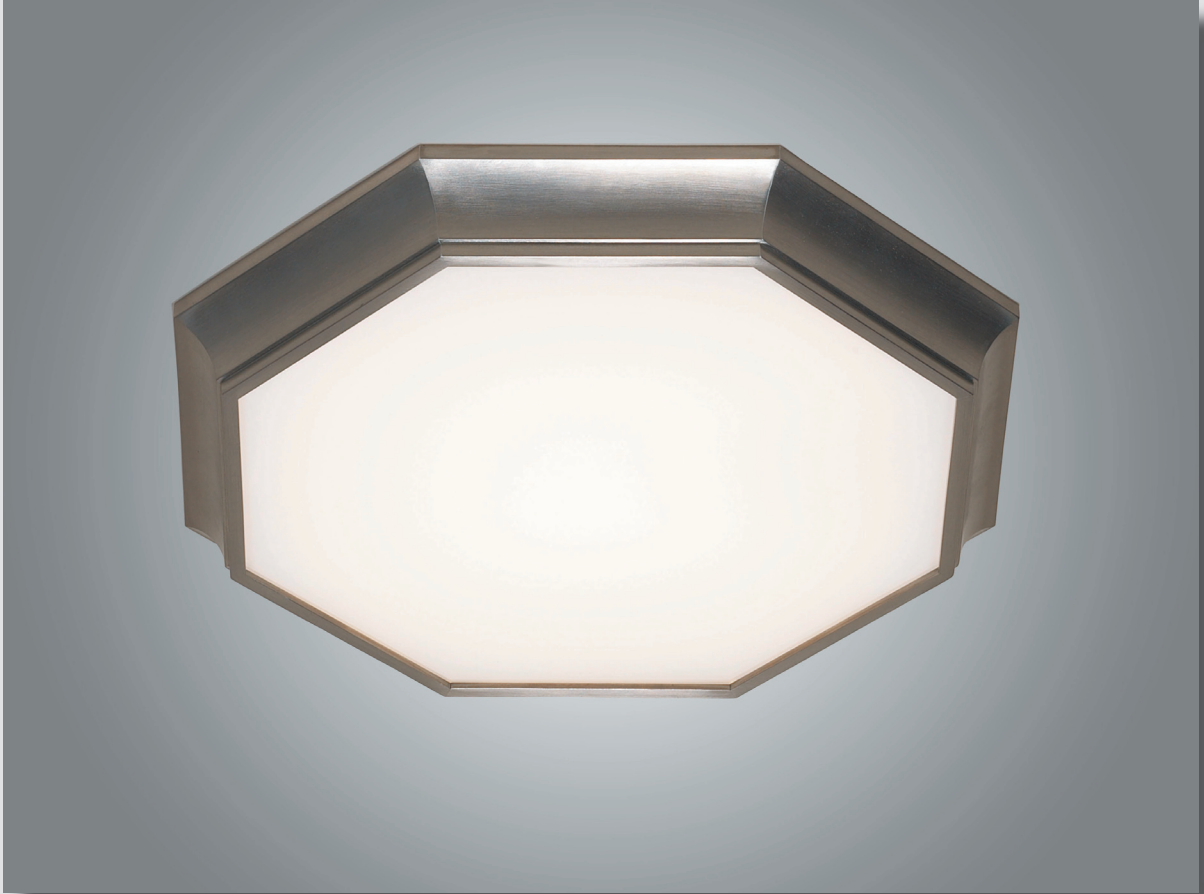


WEBSTER



CEILING FIXTURES - WEBSTER

RS31457-12

Webster is shown with a Satin Nickel Finish and a Clear Glass Frosted diffuser.

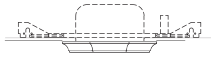
MODEL NO. &
DIMENSIONS

METAL FINISHES

DIFFUSERS

LAMPING
OPTIONS

WEBSTER



RS31457-12
Diameter: 12 1/2"
Height: 1 1/2"
Weight: 8 Lbs.

AB Antique Brass
SB Satin Brass
PC Polished Chrome
SC Satin Chrome
PN Polished Nickel
SN Satin Nickel

OC White Flashed Opal Glass
9E Clear Glass Frosted

65I 1x100W BT-15
Medium Base
1 120V
69I 1x100W A-60
European Lamping
E-27 Base 220V
19H 2x13W CFQ 4-pin
G24q-1 Base
3 120V -277V Universal
20H 2x18W CFQ 4-pin
G24q-2 Base
3 120V -277V Universal

Note: Fixture mounts to a recessed ceiling housing with an 8 1/2" x 8 1/2" square x 4 3/8" high cut-out.

CEILING FIXTURES - WEBSTER

GENERAL NOTES

- All fluorescent models are Electronic High Power Factor.
- Cut sheets are available showing all details and mounting information.
- I.B.E.W. labeled and cUL listed
- Inquire with factory for custom finishes, diffusers and lamping.
- F.O.B. Astoria, New York
- Lamps and mounting hardware not included.
- Specifications are subject to change. Please confirm with factory when ordering.

When specifying or ordering, please indicate:

_____ - _____ - _____ - 0 - _____ - _____
Model Number - Metal Finish - Diffuser - 0 - Lamping - Voltage

For Example a Webster in Satin Brass and White Flashed Opal Glass with Incandescent 120V Lamping would be:

RS3145712 - SB - OC - 0 - 65I - 1
Model Number - Metal Finish - Diffuser - 0 - Lamping - Voltage