

VERONA CONICAL, CONVEX & FLAT



MG26304-03 - Verona Flat
This ceiling fixture has a height of 1" below ceiling. It is shown in a Satin Brass with White Opal Glass diffuser.



MG26304-01 - Verona Conical
This ceiling fixture has a height of 5 1/2" below ceiling. It is shown in a Satin Nickel with White Opal Glass diffuser.



MG26304-02- Verona Convex
This ceiling fixture has a height of 1 3/4" below ceiling. It is shown in Polished Brass with White Opal Glass diffuser.

CEILING FIXTURES - VERONA CONICAL, CONVEX & FLAT

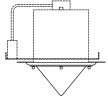
MODEL NO. &
DIMENSIONS

METAL FINISHES

DIFFUSERS

LAMPING
OPTIONS

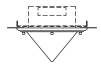
VERONA CONICAL



Incandescent
Housing - 150W



Incandescent
Housing - 100W



Fluorescent
Housing

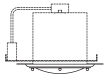
MG26304-01
Width: 12 1/2"
Height: 5 1/2"
below ceiling
Weight: 10 Lbs.

AB Antique Brass
PB Polished Brass
SB Satin Brass
PC Polished Chrome
SC Satin Chrome
PN Polished Nickel
SN Satin Nickel
EB Painted Etruscan Bronze

OC White Flashed Opal Glass

02I 1x150W, A-19
Medium Base
10" Recessed Depth
01I 1x100W, A-19
Medium Base
5 3/8" Recessed Depth
1 120V
21H 2x26W CFQ 4-pin
G24q-3 Base
3 7/8" Recessed Depth
1 120V or **2** 277V

VERONA CONVEX



Incandescent
Housing - 150W



Incandescent
Housing - 100W



Fluorescent
Housing

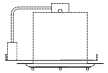
MG26304-02
Width: 12 1/2"
Height: 1 3/4"
below ceiling
Weight: 10 Lbs.

AB Antique Brass
PB Polished Brass
SB Satin Brass
PC Polished Chrome
SC Satin Chrome
PN Polished Nickel
SN Satin Nickel
EB Painted Etruscan Bronze

OC White Flashed Opal Glass

02I 1x150W, A-19
Medium Base
10" Recessed Depth
01I 1x100W, A-19
Medium Base
5 3/8" Recessed Depth
1 120V
21H 2x26W CFQ 4-pin
G24q-3 Base
3 7/8" Recessed Depth
1 120V or **2** 277V

VERONA FLAT



Incandescent
Housing - 150W



Incandescent
Housing - 100W



Fluorescent
Housing

MG26304-03
Width: 12 1/2"
Height: 1"
below ceiling
Weight: 10 Lbs.

AB Antique Brass
PB Polished Brass
SB Satin Brass
PC Polished Chrome
SC Satin Chrome
PN Polished Nickel
SN Satin Nickel
EB Painted Etruscan Bronze

OC White Flashed Opal Glass

02I 1x150W, A-19
Medium Base
10" Recessed Depth
01I 1x100W, A-19
Medium Base
5 3/8" Recessed Depth
1 120V
21H 2x26W CFQ 4-pin
G24q-3 Base
3 7/8" Recessed Depth
1 120V or **2** 277V

CEILING FIXTURES - VERONA CONICAL, CONVEX & FLAT

GENERAL NOTES

- All fluorescent models are electronic High Power Factor.
- Cut sheets are available showing all details and mounting information.
- I.B.E.W. labeled and cUL listed
- Inquire with factory for custom finishes, diffusers and lamping.
- F.O.B. Astoria, New York
- Lamps and mounting hardware not included
- Specifications are subject to change. Please confirm with factory when ordering.

When specifying or ordering, please indicate:

_____ - _____ - _____ - 0 - _____ - _____
Model Number - Metal Finish - Diffuser - 0 - Lamping - Voltage

For Example a Verona Conical in Antique Brass and White Flashed Opal Glass diffuser and 120V fluorescent lamping would be:

MG2630401 - AB - OC - 0 - 21H - 1
Model Number - Metal Finish - Diffuser - 0 - Lamping - Voltage