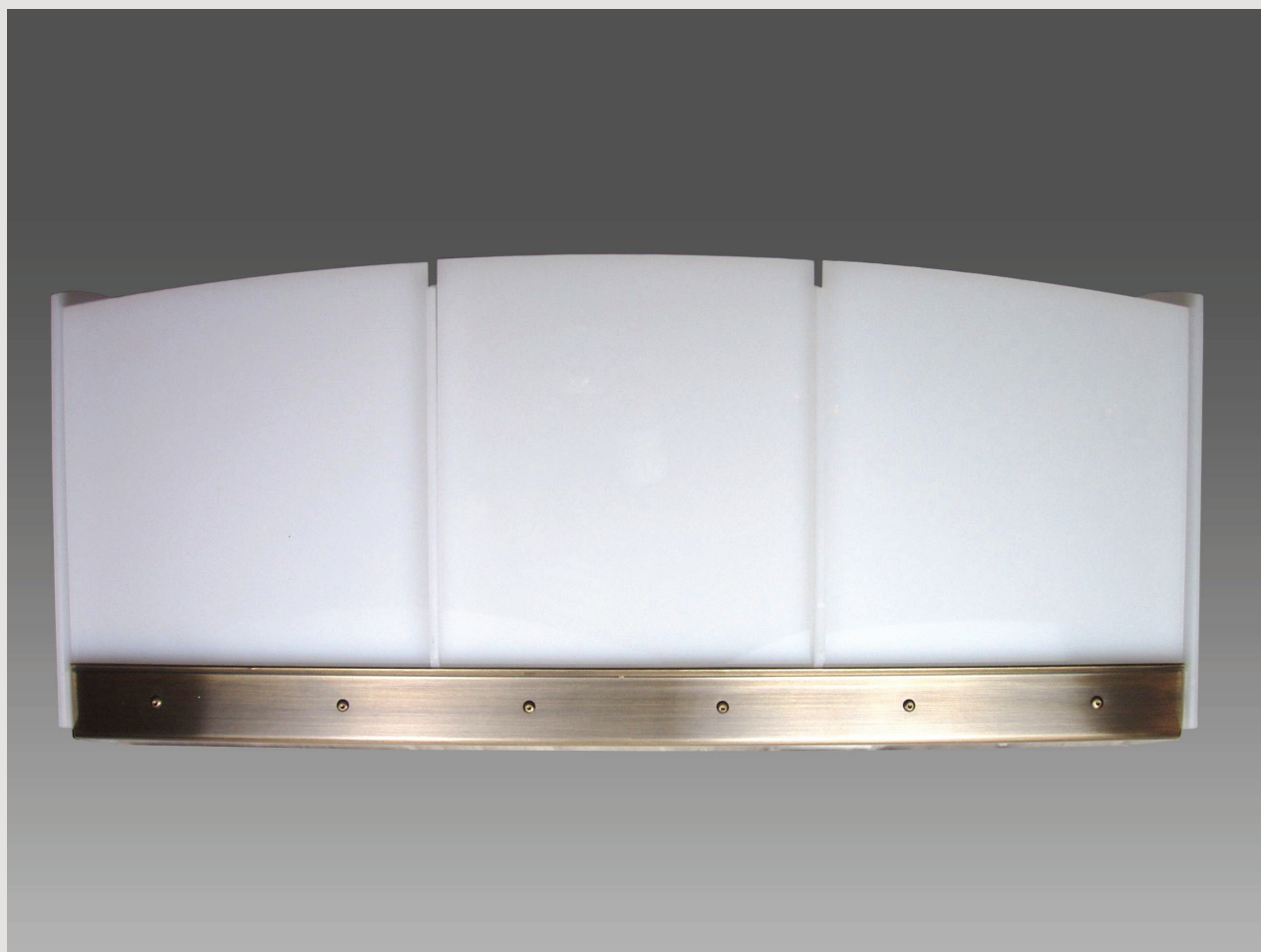


# ARC WALL WASH MODULE



WALL SCONCES - ARC WALL WASH MODULE

**KW29298**

Arc Wall Wash Module is 24 1/4" wide and is shown in White Acrylic with an Antique Brass Finish.

BALDINGER KEVIN WALZ COLLECTION

**WS28**

BALDINGER KEVIN WALZ COLLECTION

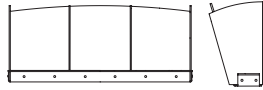
MODEL NO. &  
DIMENSIONS

METAL FINISHES

DIFFUSERS

LAMPING  
OPTIONS

**ARC WALL WASH  
MODULE**



**KW29298**  
Width: 24 1/4"  
Height: 10"  
Projection: 6 1/2"  
Weight: 14 Lbs.

**AB** Antique Brass  
**PB** Polished Brass  
**SB** Satin Brass  
**PC** Polished Chrome  
**SC** Satin Chrome  
**PN** Polished Nickel  
**SN** Satin Nickel

**3D** White Acrylic  
**4A** Beige Faux Alabaster  
on Acrylic  
**4G** Beige Faux on Clear  
Acrylic  
**6D** White Faux Alabaster  
on Acrylic

**12I** 3x60W T-10  
Medium Base  
**1** 120V only  
**20H** 3x18W CFQ 4-pin  
G24q-2 Base  
**1** 120V or **2** 120V

NOTE: Individual modules can be connected to create linear configurations.

WALL SCONCES - ARC WALL WASH MODULE

**GENERAL NOTES**

- Fluorescent models are electronic High Power Factor.
- Fixture mounts to a 2"x3" junction box mounted horizontally.
- Cut sheets are available showing all details and mounting information.
- I.B.E.W. labeled and cUL listed
- Inquire with factory for custom finishes, diffusers and lamping.
- F.O.B. Astoria, New York
- Lamps and mounting hardware not included.
- Specifications are subject to change. Please confirm with factory when ordering.

**When specifying or ordering, please indicate:**

\_\_\_\_\_ - \_\_\_\_\_ - \_\_\_\_\_ - 0 - \_\_\_\_\_ - \_\_\_\_\_  
Model Number - Metal Finish - Diffuser - 0 - Lamping - Voltage

For Example an Arc Wall Wash Module in Satin Nickel with a White Acrylic  
diffuser and incandescent lamping would be:

KW29298 - SN - 3D - 0 - 12I - 1  
Model Number - Metal Finish - Diffuser - 0 - Lamping - Voltage

**BALDINGER ARCHITECTURAL LIGHTING INC.**

19-02 Steinway Street, Astoria, NY 11105 TEL (718) 204-5700 FAX (718) 721-4986

© 2007 BALDINGER ARCHITECTURAL LIGHTING INC.

www.baldinger.com